

# GRAINSENSE LAB

User manual



**GrainSense**

---

## Imprint:

Imprint Issue: 12.2023.

Manufacturer:

GrainSense Oy

Tutkijantie 9

90590 Oulu

Finland

Contact details can be found on the back page of this manual.

### Information

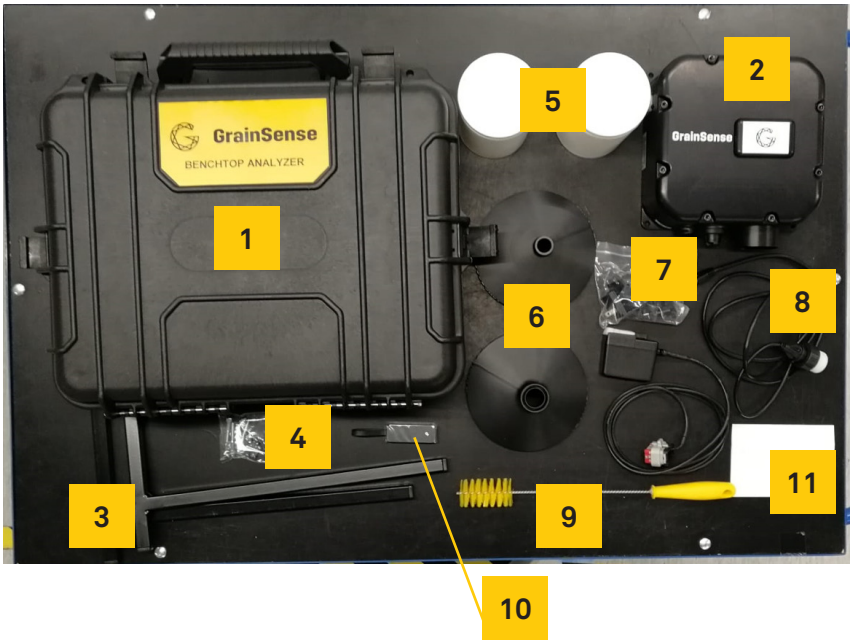
The information included in this manual corresponds to our current state of knowledge and is no claim for completeness.

This manual is only intended for the **GrainSense Lab analyzer 1.0**. Before using the GrainSense analyzer, the operator must carefully read the detailed instructions for the safe and correct usage of the GrainSense analyzer.

## Table of Contents

1. Package contents	3
2. Hardware installation steps	9
3. Account registration	13
4. Measurements, settings and cloud data	14

# 1. Package contents



No	Item
1	Shipping / Carry case
2	Sensor
3	Legs
4	Screws, washers and wingnuts
5	Grain containers
6	Funnels
7	Power supply, cable and adapters
8	Ethernet cable
9	Cleaning brush
10	Ethernet adapter
11	The document

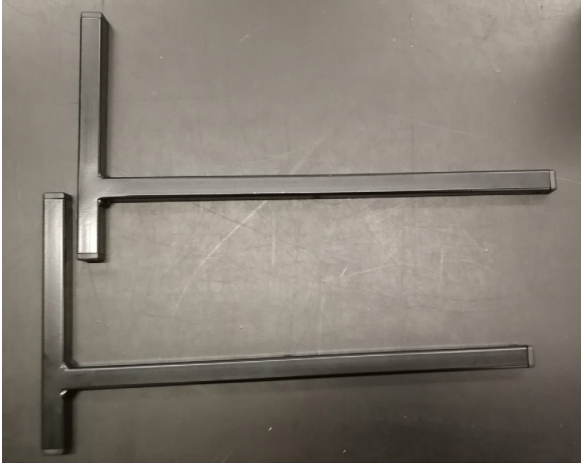
## 1. Shipping / Carry case



## 2. Sensor



### 3. Legs



### 4. Screws, washers and wingnuts



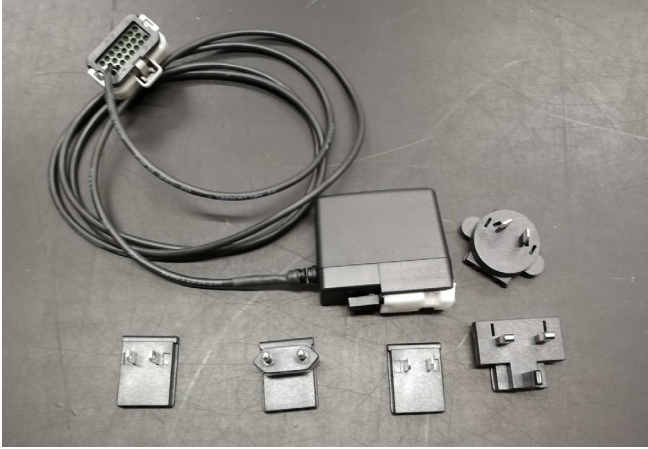
## 5. Grain containers



## 6. Funnels



## 7. Power supply, cable and adapters



## 8. Ethernet cable





## 9. Cleaning brush



## 10. Ethernet adapter



## 11. Package list document

## 2. Hardware installation steps

1. GS Lab analyzer is packed in a protective carry case

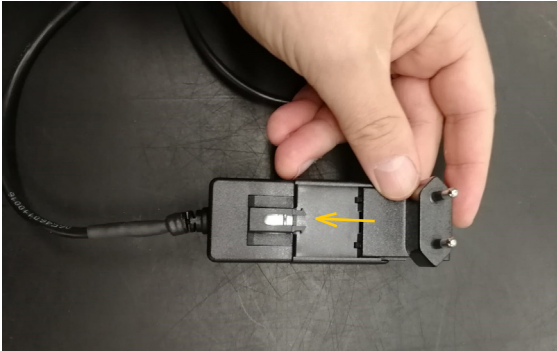


2. Open the case



3. Check that package contains all necessary items (see package contents)

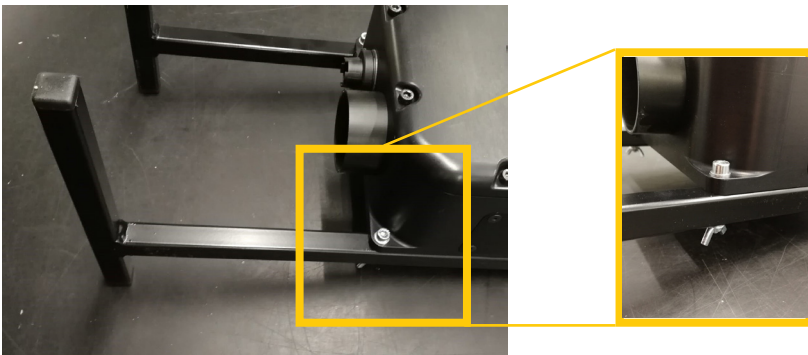
4. Plug correct power supply adapter (EU adapter in picture)



5. Connect ethernet cable to ethernet adapter



6. Install legs by using screws, washers and wingnuts



## 7. Connect ethernet cable to the sensor



## 8. Connect power connector



## 9. Ready installation (PC not included)



## 10. Follow **Software Installation Guide**

Please follow: **Chapter 3. Account registration instructions to create an account.**

### 3. Account registration

**a) Register an account on GrainSense website:**

(<https://grainsense.com/pages/account-registration>)

Make sure that you choose the right product "**GRAINSENSE USER ACCOUNT LICENCE**"

Unless you have a VAT -number within EU, you may skip said input on the registration form

Finish account registration by checking your chosen email address for a verification email, then click the verification link. If you get an error during registration or did not receive a verification email, please first check your junk or spam folder(s). If you can't find the verification email, or need help with anything – please contact GrainSense Support at: [support@grainsense.com](mailto:support@grainsense.com)

**b) The welcome email contains software installer link.**

**c) Please follow Software installation instructions (included to the package).**

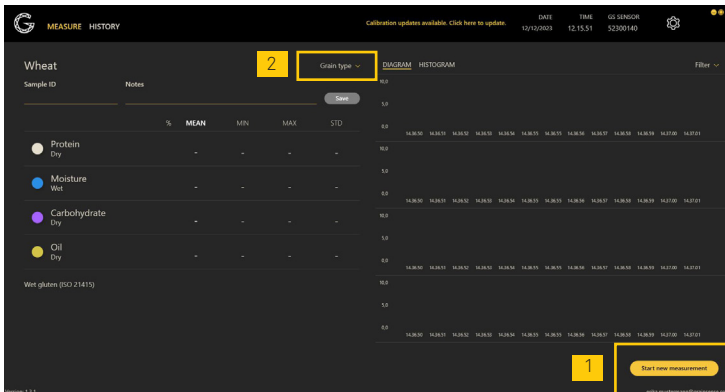
### 4. Measurements, settings and cloud data

**Start up the Lab application on your pc and log in using your credentials, make sure that the sensor unit has power and the sensor cable is properly connected**

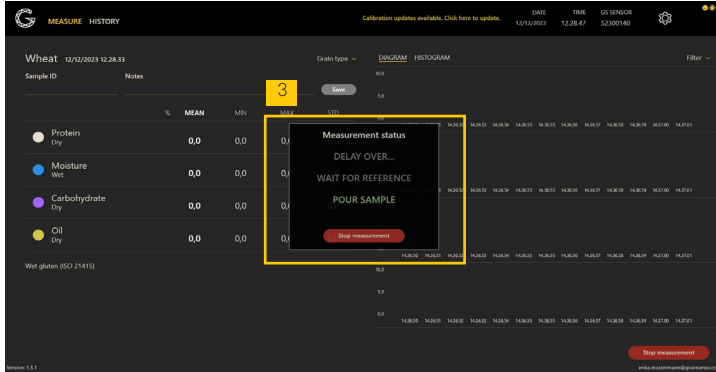
1) Once you have signed in on the application you can begin your measurements by clicking "**Start a new measurement**" and choosing the species that you will be measuring this time (If you get an error stating "No sensor cable" or similar, check that the sensor cable is properly attached and then power sensor off and on, by removing it from the power outlet and putting it back in again)

2) Select the species that you wish to measure from either of two places. Near the top left corner you can select "**Grain type**" for a dropdown menu to fast select a species, if you wish a selection to stay for when you restart the application, change the species via settings (the cogwheel to the right)

Make sure that you have two 1 litre vessels and a funnel, put an empty vessel below the output pipe of the sensor unit and then connect the correct funnel onto the intake slot on top of the sensor unit.

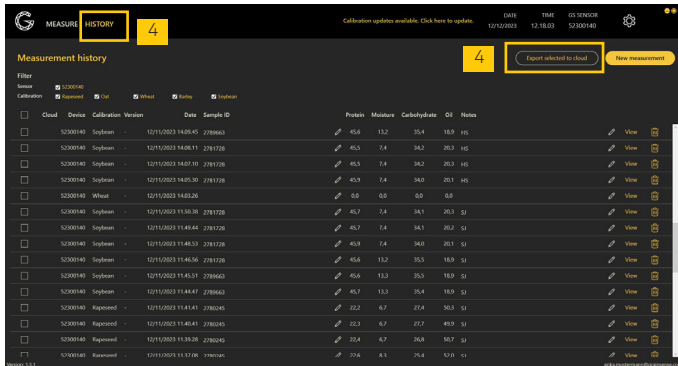


3) After you have started a measurement, a small **pop-up screen appears telling you that a reference measurement is being taken** and shortly after that the device is ready for a measurement and you can pour in the sample vessel (extra delay period can be adjusted, or nullified in the settings)  
**Note: To get a good flow and more reliable results, be sure to pour in the entire sample in at once, the funnel is able to take the entire content of the white jar in on session.**



**Note:** Depending on your settings the measurement session will either automatically stop after the grain flow ends or you will manually have to stop the measurement, after which you can find the completed measurement in the history tab, to view or edit its note (you may choose to use the auto-stop -feature from the settings by ticking the box)

4) To export any measurement data to the cloud, simply select the **"History"** -tab and from there select all the measurements that you wish to export, then click **"Export selected to cloud"**, you can select multiple measurements or just a single one. A symbol will be created for any measurements exported to cloud, and any cloud measurements will also be visible on the [user dashboard](#) (log in from GrainSense website)



From the [user dashboard](#) you can export any measurement data into excel -format, by selecting the measurement that you wish to export from the left side – and then selecting **"Action"** near the top to either **"Delete"**, **"Export"** or **"Join"** a measurement. When you choose to export a measurement, you can choose to deliver it via email by inputting a valid email address or just a direct download.

The software will inform if there are any updates to install, but this can be manually checked as well, as well as calibration changes.

For technical support, please contact: [support@grainsense.com](mailto:support@grainsense.com)

[www.grainsense.com](http://www.grainsense.com)

